

DNA Molecular Weight Marker XVI

250 base pair ladder

Cat. No. 1 855 638

50 µg = 1 A₂₆₀ unit

Version 3, Nov. 1999

Store at -15 to -25° C

Product description

Solution in 10 mM Tris-HCl, 1 mM EDTA, pH 8.0

Concentration 250 µg/ml

Fragment mixture prepared by cleavage of specially constructed plasmids with restriction endonucleases. The mixture contains 12 blunt-ended, double-stranded DNA fragments covering the size range of 250 to 3000 base pairs. The 1000 and 2000 bp banding pattern are 3 × brighter. Electrophoretic separation of this molecular weight marker results in a regular pattern.

Application

The 250 bp ladder allows accurate sizing of DNA fragments generated by PCR or restriction digest separated on agarose gels. The DNA molecular weight marker XVI can be used in conjunction with DNA molecular weight marker XIII (50 bp ladder)*, DNA molecular weight marker XIV (100 bp ladder)* and DNA molecular weight marker XVII (500 bp ladder)* for precise size determination.

Typical analysis

The DNA fragment mixture shows a banding ladder with 12 DNA fragments in agarose gel electrophoresis as shown in the figure.

Stability

Stable at -15 to -25° C

Storage

This product is shipped on dry ice and should be stored at -15 to -25° C until use. Once thawed we recommend further storage at 2-8° C. Repeated freezing and thawing should be avoided.

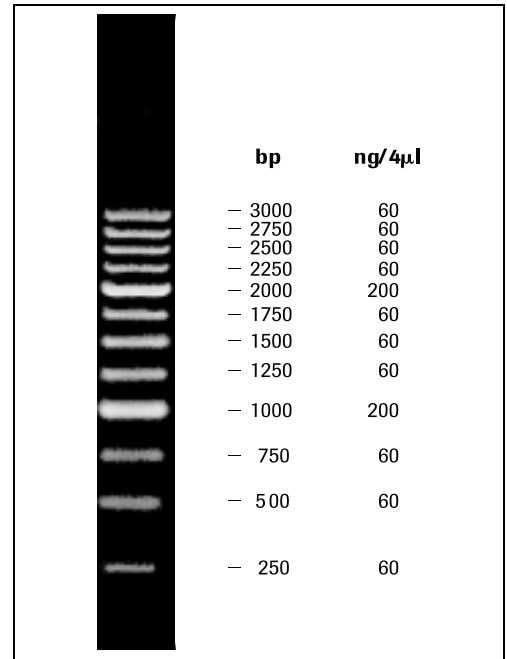


Fig.: Separation of 1 µg DNA molecular weight marker XVI on a 0.7% agarose gel. Ethidiumbromide stain.

* available from Roche Molecular Biochemicals

Argentina 541 954 5555; **Australia** (02) 9899 7999; **Austria** (01) 277 87; **Belgium** (02) 247 4930; **Brazil** +55 (11) 3666 3565; **Bulgaria** +35929625408; **Cameroon** 237-370269; **Canada** (450) 086 7050; (800) 361 2070; **Chile** 00 56 (2) 22 33 737 (central) 00 56 (2) 22 32 099 (Exec); **China** 86 21 6427 5586; **Colombia** 0057-1-3412797; **Cyprus** +357-2-311362; **Czech Republic** (0324) 45 54, 58 71-2; **Denmark** +45 363 999 58; **Egypt** 20-2-3619047; **Estonia** 372-7-447600; **Ethiopia** 251-1-552799; **Finland** +358 9 525 333 66; **France** 04 76 76 30 87; **Germany** (0621) 759 8568; **Greece** 3 (01) 67 40 238; **Hong Kong** (852) 2485 7596; **India** +91-22-8379906; **Indonesia** 62 (021) 252 3820 ext. 755; **Iran** +98-21-8072374 / +98-21-8797027; **Israel** 972-6- 6380569; **Italy** 039 247 4109-4181; **Japan** 03 3432 3155; **Kenya** +254-2-750112; **Korea** 82-2-3471-6500; **Kuwait** +965-4837859; **Latvia** 371-787828309; **Lebanon** Fax: 00961-1-399667; **Lithuania** 370-2-729715; **Luxembourg** +352-496098; **Malta** Fax: +356-341087; **Morocco** Fax: +212-2-944040; **Malaysia** 60 (03) 755 5039; **Mexico** (5) 227 8967; **Netherlands** (036) 539 4911; **New Zealand** (09) 276 4157; **Nigeria** +234-1-521767; **Norway** (47) 23 373300; **Philippines** (632) 810 7246; **Poland** +48 (22) 22 66 84 305; **Portugal** (01) 4171717; **Republic of Ireland** 1 800 40 90 41; **Romania** +40-1-2123763; **Russia** (49) 621 759 8636 Fax: (49) 621 759 8611; **Saudia Arabia** +966-1-4010364; **Singapore** 0065 272 9200; **Slovenia** +386 61 1363528; **South Africa** (011) 886 2400; **South Korea** 02 569 6902; **Spain** (93) 201 4411; **Sweden** (08) 404 8800; **Switzerland** +41 (41) 799 6161; **Taiwan** (02) 736 7125; **Thailand** 66 (2) 274 07 08 (12 line); **Turkey** 0090 212 216 32 80; **United Arab Emirates** +971-4-694351; **United Kingdom** (0800) 521578; **USA** (800) 428 5433; **Venezuela** Fax: +0058-4810697; **Yugoslavia** +381 11 137163.

E-mail Address

argentina.biochem@roche.com
biochem.au@roche.com
Gerhard.Muehlbauer@roche.com
biochem.be@roche.com
Valent@mbx.cit.bg
africhem@camnet.cm
biochem.ca@roche.com
biochem.cn@roche.com
Info@medisell.com.cy
Bm-comp@bm-comp.cz
dk.biochem@roche.com
ou.melestrum@net.lie
pharscet@telecom.net.et
hels-
biochem.fr@roche.com
biocheminfo.de@roche.com
Bm_roche@hotmail.com
h.hajian@tebtech.com
tubanegin@istn.irost.com
Dyn@netvision.net.il
it.biochem@roche.com
bmkbio@cel.co.jp
pharmakp@net2000.ke.com
Bmskorea@chollianet
react@ncc.moc.kw

Country

Argentina
Australia
Austria
Belgium
Bulgaria
Cameroon
Canada
China
Cyprus
Czech Republic
Denmark
Estonia
Ethiopia
Finland
France
Germany
India
Iran
Iran
Israel
Italy
Japan
Kenya
Korea
Kuwait

E-mail Address

Raitis@invitros.lv
Sakkijha@rdleb.com
Gintaras@eksma.lt
diagnostics@prophac.lu
Vccl@vol.net.mt
Aioche.echo@donia.net.ma
biocheminfo.nl@roche.com
biochem.nz@roche.com
bofungwu@linkserve.com.ng
biochem.se@roche.com
biochem.pt@roche.com
Topdiag@fx.ro
biochem.sg@roche.com
roche.diagnostics@siol.net
south_africa.bioboffin@roche.com
biochem.es@roche.com
biochem.se@roche.com
BiochemInfo.CH@roche.com
Jean-Marie.kindbeiter@roche.com
bmae@emirates.net.ae
uk.biochem@roche.com
biochems.us@roche.com
Mvalentiner@telcel.net.ve
dusica@eunet.yu
biochems.row@roche.com

Country

Latvia
Lebanon
Lithuania
Luxembourg
Malta
Morocco
Netherlands
New Zealand
Nigeria
Norway
Portugal
Romania
Singapore
Slovenia
South Africa
Spain
Sweden
Switzerland
Tunisia
United Arab Emirates
United Kingdom
USA
Venezuela
Yugoslavia
All other countries

<http://biochem.roche.com/pack-insert/1855638a.pdf>



Roche Diagnostics GmbH
Roche Molecular Biochemicals
Sandhofer Strasse 116
D-68305 Mannheim
Germany